



FATEH SCAN

Tel: +98 21 910 31 987
Sale.FatehScan@Gmail.com



Portable X-Ray Inspection System

PX120S/D*

Introduction

The PX120S/D* digital imaging device is an inspection assist system that can display X-ray images of bags or packages. This device is made of an X-ray generator and a detector panel. The unique features of this device are portability and the possibility of wireless shooting. Using the software of this device, the user, while identifying the suspicious package, can check the contents inside it.

Applications

- Inspection of suspicious packages
- Character protection
- Protecting sensitive places
- Airports and security teams
- EOD

Features

- Speed of scanning operations
- Large size of active area
- Powerful and multilanguage UI
- Low dose leakage
- Stable wireless connection
- Single and dual* energy imaging
- Material discrimination*

* Optional Features

Technical Specifications

Detector Panel

Wire Detection	39AWG (40AWG*)
Spatial Resolution	0.8mm (0.4mm*)
AcquisitionTime	10s~60s
Panel Dimensions	850*550*50mm
Active Area	600*400mm
Power Supply	3Ah Li-ion Bat.
Connection	WiFi, LAN
Operating Temp.	-10~+45 C
Penetration	20mm (steel)

X-Ray Generator

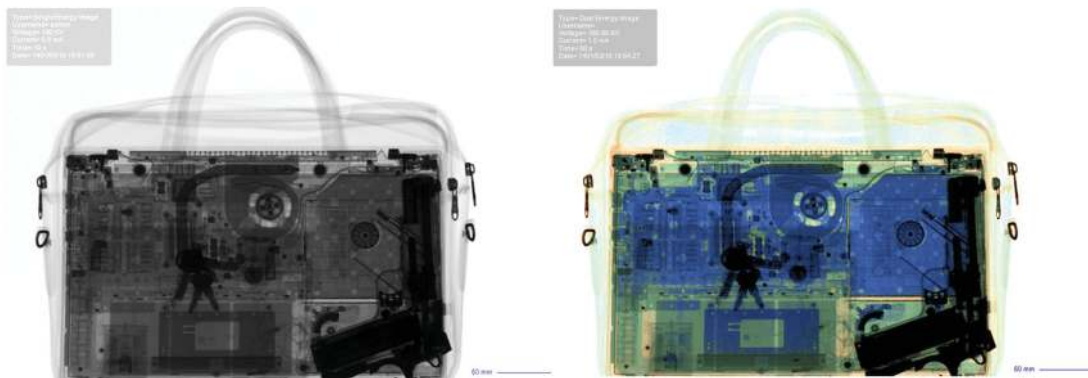
Voltage (kV)	40~120
Current (mA)	0.2~1
Power Supply	3Ah Li-ion Bat.
Connection	WiFi, LAN
Operating Temp.	-10~+45 C

Software

Output Extension	JPEG, PNG, Exlc.
Exposure Type	SE (DE*)
Image Processing	Invert, Emboss, Pseudo, Focus, Rotate, Histogram, Annotation



PX120N



Portable X-Ray Inspection System

PX120N

Introduction

The PX120N X-ray digital imaging device has different capabilities from the 120S/D model, which can be noted for the low weight and thickness of the detector and the possibility of installing it both horizontally and vertically. The new design of the generator in the form of a cube with the property of lower weight and easy to carry, has made this product the center of attention of many experts.

Applications

- Inspection of suspicious packages
- Character protection
- Protecting sensitive places
- Airports and security teams
- EOD

Features

- Speed of scanning operation
- Large size of active area
- Powerful and multilanguage UI
- Low dose leakage
- Stable wireless connection
- Flexible installing and utilization
- Compact casing and low weight

* Optional Features

Technical Specifications

Detector Panel

Wire Detection	39AWG, 40AWG*
Spatial Resolution	0.8mm, 0.4mm*
Acquisition Time	10s~60s
Panel Dimensions	810*430*30mm
Active Area	600*400mm
Power Supply	3Ah Li-ion Bat.
Connection	WiFi, LAN
Operating Temp.	-10~+45 C
Penetration	20mm (steel)

X-Ray Generator

Voltage (kV)	40~120
Current (mA)	0.2~1
Power Supply	3Ah Li-ion Bat.
Connection	WiFi, LAN
Operating Temp.	-10~+45 C

Software

Output Extension	JPEG, PNG, Exlc.
Exposure Type	SE / DE*
Image Processing	Invert, Emboss, Pseudo, Focus, Rotate, Histogram, Annotation



Portable X-Ray Inspection System

PX160D

Introduction

The PX160D digital imaging device provide a radiographic image of the weld of a tube, pipe or other parts. Distinctive features of this device care maximum X-ray output energy and less detector thickness and weight. This device allows the user to provide digital radiography of oil and gas transmission lines online. Also, the user can check the existence of welding defects, corrosion, cracking and porosity by using software and special image processing algorithms of this system.

Applications

- D-Radiography of industrial welds
- Detection of pipe corrosion
- Quality control of casting
- Non-destructive testing
- EOD

Features

- real time welding quality review
- Large size detector
- Powerful and native software
- Low dose leakage
- Stable wireless connection
- Single and dual energy imaging
- image processing algorithms

* Optional Features

Technical Specifications

Detector Panel

Wire Detection	39AWG, 40AWG*
Spatial Resolution	0.8mm, 0.4mm*
AcquisitionTime	10s~60s
Panel Dimensions	810*4300*30mm
Active Area	600*400mm
Power Supply	3Ah Li-ion Bat.
Connection	WiFi, LAN
Operating Temp.	-10~+45 C
Penetration	35mm (steel)

X-Ray Generator

Voltage (kV)	80~160
Current (mA)	0.2~1
Power Supply	3Ah Li-ion Bat.
Connection	WiFi, LAN
Operating Temp.	-10~+45 C

Software

Output Extension	JPEG, PNG, Exlc.
Exposure Type	DE
Image Processing	Invert, Emboss, Pseudo, Focus, Rotate, Histogram, Annotation